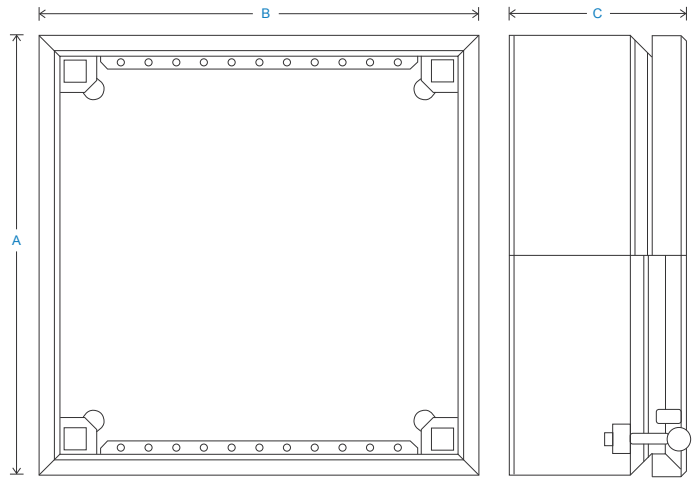
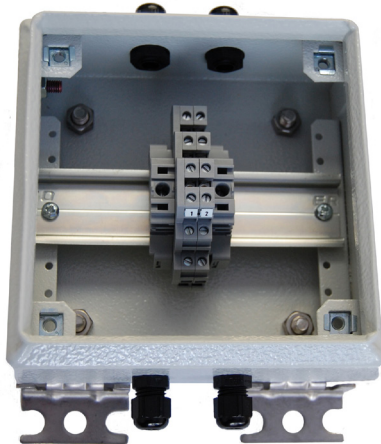


HS-JE Junction Enclosure

Mild Steel

Key Features

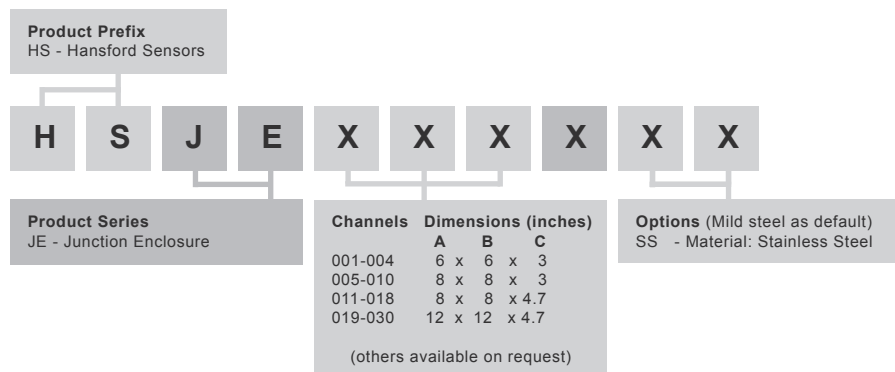
- Accelerometer cable glanding
- Ease of installation
- Flexible combinations



Technical Performance

Inputs	Accelerometer cabling	Glanding	Glands supplied but not fitted
Output	Multi-core glanding		Holes are punched for:
Material	Mild Steel painted RAL 7042 as standard (alternatives can be specified in options of 'How To Order' table)	Single input M12 - \varnothing 0.1-0.3in cable Single input M20 - \varnothing 0.3-0.7in multi-core cable	Multi input M20 - 3 x \varnothing 0.2in
Dimensions	see: 'How To Order' table	Labelling	Channel locations - other
Sealing	NEMA 4X	Mounting	labelling available upon request
Termination	Klippon Type	EMC	supplied are 4 x Brackets
Operating Temperature Range	-4 to 266°F		EN61326-1:2013

How To Order



www.hansfordsensors.com
sales@hansfordsensors.com

We reserve the right to alter the specification of this product without prior notice
TS087U.2

