

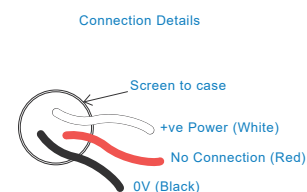
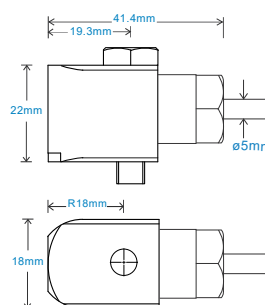
### AC acceleration output via Silicon Cable

## Key Features

- Mini compact design
- Waterproof
- Side entry for easy access

## Industries

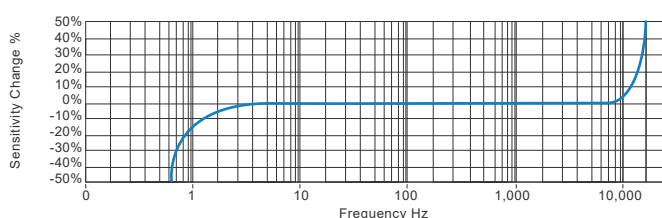
Automotive, Machine Tools, OEM



Technical Performance		Mechanical	
Mounted Base Resonance	see 'How To Order' table (nominal)	Case Material	Stainless Steel
Sensitivity	see: 'How To Order' table $\pm 10\%$	Sensing Element/Construction	PZT/Shear
	Nominal 80Hz at 22°C	Mounting Torque	8 Nm
Frequency Response	2Hz (120cpm) to 14kHz (840kcpm) $\pm 5\%$	Mounting Bolt Provided	see: 'How To Order' table x 27mm long
	1.5Hz (90cpm) to 16kHz (960kcpm) $\pm 10\%$	Weight	83gms (nominal) body only
	0.8Hz (48cpm) to 19kHz (1,140kcpm) $\pm 3\text{dB}$	Maximum Cable Length	1000 metres
Isolation	Base isolated	Standard Cable Length	5 metres
Range	see: 'How To Order' table	Screened Cable	Silicon - length to be specified with order
Transverse Sensitivity	Less than 5%	Mounting Threads	see: 'How To Order' table
		Submersible Depth	100 metres max (10 bar)

Electrical		Environmental	
Electrical Noise	0.1mg max	Operating Temperature Range	-55 to 150°C
Current Range	0.5mA to 8mA	Sealing	IP68
Bias Voltage	10 - 12 Volts DC	Maximum Shock	5000g
Settling Time	1 second	EMC	EN61326-1:2013
Output Impedance	200 Ohms max.		
Case Isolation	>10 <sup>8</sup> Ohms at 500 Volts		

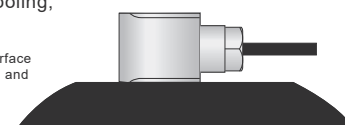
### Typical Frequency Response (at 100mV/g)



## Applications

Fans, Motors, Pumps, Compressors,  
Centrifuges, Conveyors, Air Handlers,  
Gearboxes, Rolls, Dryers, Presses,  
Cooling, VAC, Spindles, Machine Tooling,  
Process Equipment

Vibration sensor should be firmly fixed to a flat surface (spot face surface may be needed to be produced and cable anchored to sensor body.)



## How To Order

**Product Prefix**  
HS - Hansford Sensors

**Product Series**  
180 - Compact Premium Industrial Vibration Sensor

**Cable Length (if integral cable)**  
QXX - length specified in metres

**Extra Options (if required)**  
F - Filtered  
L - 316L Stainless Steel  
S - 90° Side Exit  
Y - 5% tolerance on sensitivity

**Sensitivity**  
010 - 10mV/g  
100 - 100mV/g

**Range**  
±800g  
±80g

**Resonant Frequency**  
30kHz (1,800kcpm)  
24kHz (1,440kcpm)

**Cable/Connector**  
01 - PUR  
07 - Silicon  
08 - Flame Retardant  
50 - 2 Pin MS  
54 - M12

**Mounting Threads**  
02 - ¼-28" UNF Male  
06 - M6 x 1mm Male



www.hansfordsensors.com  
sales@hansfordsensors.com

We reserve the right to alter the specification of this product without prior notice

TS1391

