

AC acceleration output via PUR Cable

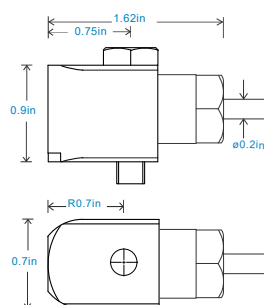
Key Features

- Mini compact design
- Waterproof
- Side entry for easy access

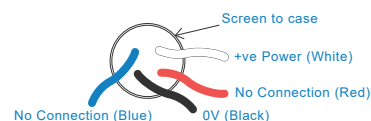


Industries

Automotive, Machine Tools, OEM



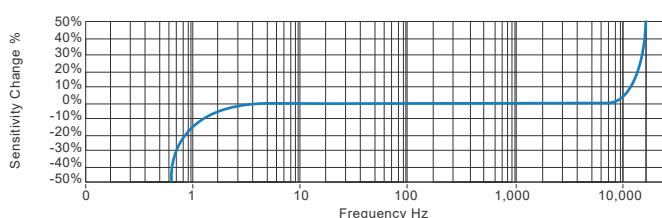
Connection Details



Technical Performance		Mechanical	
Mounted Base Resonance	see 'How To Order' table (nominal)	Case Material	Stainless Steel
Sensitivity	see: 'How To Order' table $\pm 10\%$	Sensing Element/Construction	PZT/Shear
	Nominal 80Hz at 72°F	Mounting Torque	5.9ft. lbs
Frequency Response	120cpm (2Hz) to 840kcpm (14kHz) $\pm 5\%$	Mounting Bolt Provided	see: 'How To Order' table x 1in long
	90cpm (1.5Hz) to 960kcpm (16kHz) $\pm 10\%$	Weight	3 oz. (nominal) body only
	48cpm (0.8Hz) to 1,140kcpm (19kHz) $\pm 3\text{dB}$	Maximum Cable Length	3,280 ft.
Isolation	Base isolated	Standard Cable Length	16 ft.
Range	see: 'How To Order' table	Screened Cable	PUR - length to be specified with order
Transverse Sensitivity	Less than 5%	Mounting Threads	see: 'How To Order' table
		Submersible Depth	328 ft. max (10 bar)

Electrical		Environmental	
Electrical Noise	0.1mg max	Operating Temperature Range	-22 to 194°F
Current Range	0.5mA to 8mA	Sealing	IP68
Bias Voltage	10 - 12 Volts DC	Maximum Shock	5000g
Settling Time	1 second	EMC	EN61326-1:2013
Output Impedance	200 Ohms max.		
Case Isolation	>10 ⁸ Ohms at 500 Volts		

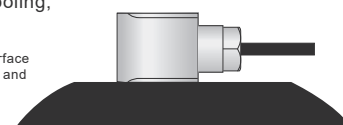
Typical Frequency Response (at 100mV/g)



Applications

Fans, Motors, Pumps, Compressors,
Centrifuges, Conveyors, Air Handlers,
Gearboxes, Rolls, Dryers, Presses,
Cooling, VAC, Spindles, Machine Tooling,
Process Equipment

Vibration sensor should be firmly fixed to a flat surface (spot face surface may be needed to be produced and cable anchored to sensor body.)



How To Order

Product Prefix		Product Series							Cable Length (if integral cable)					
HS - Hansford Sensors		180 - Compact Premium Industrial Vibration Sensor							UXX - length specified in feet					
H	S	1	8	0	S	X	X	X	X	X	X	X	X	X
Extra Options (if required)		Sensitivity		Range		Resonant Frequency		Cable/Connector			Mounting Threads			
F - Filtered L - 316L Stainless Steel S - 90° Side Exit Y - 5% tolerance on sensitivity		010 - 10mV/g 100 - 100mV/g		±800g ±80g		30kHz (1,800kcpm) 24kHz (1,440kcpm)		01 - PUR 07 - Silicon 08 - Flame Retardant 50 - 2 Pin MS 54 - M12			02 - ¼-28" UNF Male 06 - M6 x 1mm Male			



www.hansfordsensors.com
sales@hansfordsensors.com

We reserve the right to alter the specification of this product without prior notice.

TS1387U

