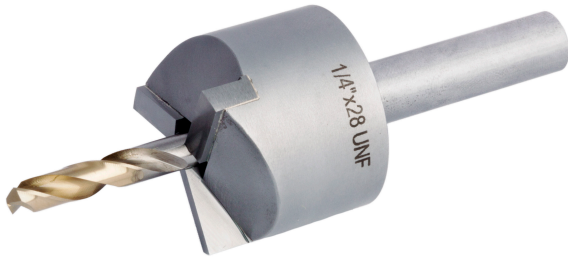


# HS-AA001-1/4

## Carbide Tipped Spot Face Tool



### Product Description

We manufacture a range of accessories for use with our comprehensive series of industrial accelerometers to achieve a secure surface fit.

The HS-AA001-1/4 Carbide Tipped Spot Face Tool is Ø1.3in, complete with Ø0.2mm HSS TiN Coated Stub Drill for 1/4"-28 UNF Tapping. This tool allows engineers to create a smooth, flat surface to install the sensor ensuring best practice mounting technique.

Also available to order with M6 or M8 thread.

### How To Order

