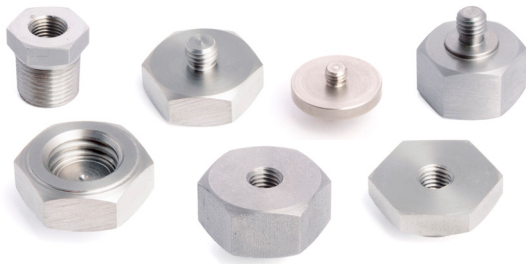


HS-AS Studs

adapters



Adapters to connect accelerometers to machine faces.

Mounting Studs provide a secure, permanent or semi-permanent point of connection

| Part No. | Connection Point 1 | Connection Point 2 | | | |
|-------------|----------------------------|--------------------|---|---|--|
| HS-AS006 | Quick Fit Female | 1/4"-28 UNF Male |  |  | |
| HS-AS009 | M6 Female | M8 Male |  |  | |
| HS-AS026 | 10-32 UNF Male | M6 Male |  |  | |
| HS-AS028 | Quick Fit Female 1/2" UNC | 1/4"-28 UNF Male |  |  | |
| HS-AS030 | M8 x 1.25 Female | 1/8"BSPT Male |  |  | |
| HS-AS032 | Quick Fit Female | M8 Male |  |  | |
| HS-AS039 | Quick Fit Female 1/2" UNC | 10-32 UNF Male |  |  | |
| HS-AS045 | Quick Fit Female | M5 Female |  |  | |
| HS-AS088 | Quick Fit Female 9/16" UNC | M5 Female |  |  | |
| HS-AS092 | 3/8" UNF Female | 3/8" NPT Male |  |  | |
| HS-AS103 | 1/4"-28 UNF Female | 1/4" NPT Male |  |  | |
| HS-AS107-M6 | M6 Female | M6 Male |  |  | |
| HS-AS111 | M8 Female | M8 Female |  |  | |
| HS-AS119 | 1/4"-28 UNF Female | 1/4"-28UNF Male |  |  | |
| HS-AS121 | 1/4"-28 UNF Female | 3/8"-16 UNC Male |  |  | |