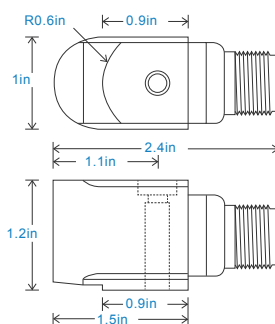


AC acceleration output via 3 Pin MS Connector

- Low voltage
- Ultra low power consumption
- Customisable features

Building services, Pulp and Paper,
Mining, Metals, Utilities, Automotive,
Water, Pharmaceutical



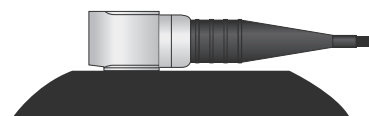
Technical Performance		Mechanical	
Mounted Base Resonance	see 'How To Order' table (nominal)	Case Material	Stainless Steel
Sensitivity	see: 'How To Order' table $\pm 10\%$	Sensing Element/Construction	PZT/Shear
	Nominal 80Hz at 72°F	Mounting Torque	5.9ft. lbs
Frequency Response	18cpm (0.3Hz) to 600kcpm (10kHz) $\pm 10\%$	Weight	6.5 oz. (nominal) body only
Isolation	Base isolated	Screened Cable Assembly	see: www.hansfordsensors.com for options
Range	see: 'How To Order' table @ 5V power	Connector	HS-AA005 - non-booted
Transverse Sensitivity	Less than 5%		HS-AA068 or HS-AA069 - booted
Amplitude Linearity	$\pm 1\%$	Mounting Threads	see: 'How To Order' table

Electrical			Environmental	
Electrical Noise		< 500µg	Operating Temperature Range	-58 to 257°F
Power Requirements	5V nominal (other voltages 1.8 to 24V on request)		Sealing	IP68
Current Consumption	100µA nominal at 5V supply (60µA at 1.8V)		Maximum Shock	5000g
Bias Voltage	50% of supply voltage		EMC	EN61326-1:2013
Settling Time	1 second			
Output Impedance	100 Ohms max.			
Case Isolation	>10 ⁸ Ohms at 500 Volts			

Figure 1 is a line graph showing the relationship between Sensitivity Change % and Frequency Hz. The x-axis is logarithmic, ranging from 0 to 10,000 Hz. The y-axis is linear, ranging from -50% to 50%. The curve shows that sensitivity change is -50% at 0 Hz, rises to 0% by 1 Hz, remains at 0% until 10,000 Hz, and then rises to 50% at 10,000 Hz.

Fans, Motors, Pumps, Compressors,
Centrifuges, Conveyors, Air Handlers,
Gearboxes, Rolls, Dryers, Presses,
Cooling, VAC, Spindles, Machine Tooling,
Process Equipment

Vibration sensor should be firmly fixed to a flat surface (spot face surface may be needed to be produced and cable anchored to sensor body.)



Product Prefix HS - Hansford Sensors		Product Series 104 - Low Power Vibration Sensor				Cable Length (if integral cable) QXX - length specified in metres								
H	S	1	0	4	S	X	X	X	X	X	X	X	X	X
Extra Options (if required) F - Filtered L - 316L Stainless Steel RT - Temperature Output PT100 S - 90° Side Exit T - Temperature Output		Sensitivity 010 - 10mV/g 030 - 30mV/g 050 - 50mV/g 100 - 100mV/g 250 - 250mV/g 500 - 500mV/g		Range ±200g ±66g ±40g ±20g ±8g ±4g		Resonant Frequency 25kHz (1,500kcpm) 25kHz (1,500kcpm) 25kHz (1,500kcpm) 25kHz (1,500kcpm) 25kHz (1,500kcpm) 25kHz (1,500kcpm)		Cable/Connector 01 - PUR 03 - Braided 07 - Silicon 13 - Flame Retardant 52 - 3 Pin MS 54 - M12		Mounting Threads 02 - ¼-28" UNF Male 06 - M6 x 1mm Male 08 - M8 x 1.25mm Male				



www.hansfordsensors.com
sales@hansfordsensors.com

We reserve the right to alter the specification of this product without prior notice.

TS895U.3

