

# HS-421SRT Accelerometer

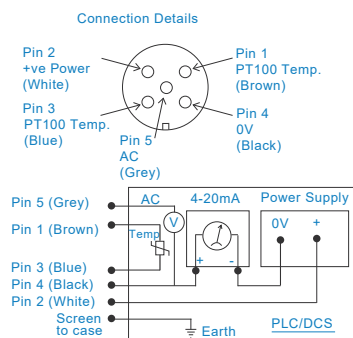
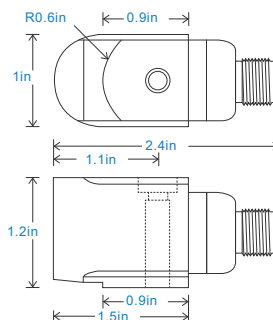
4-20mA velocity, AC acceleration and PT100 temperature output via 5 Pin M12 Connector

## Key Features

- Unique output
- For use with PLC/DCS systems and data collectors
- Side entry for easy access

## Industries

Building services, Pulp and Paper, Mining, Metals, Utilities, Automotive, Water, Pharmaceutical



## Technical Performance

Mounted Base Resonance	5kHz min
Velocity Ranges	see: 'How To Order' table $\pm 10\%$ Nominal 80Hz at 72°F
Frequency Response: 4-20mA	600cpm (10Hz) to 60kcpm (1kHz) $\pm 5\%$ - ISO10816
Frequency Response: AC	120cpm (2Hz) to 600kcpm (10kHz) $\pm 5\%$ - ISO10816
Isolation	Base isolated
Range	see: 'How To Order' table
Temperature Output	PT100(100 Ohms)
Transverse Sensitivity	Less than 5%

## Mechanical

Case Material	Stainless Steel
Sensing Element/Construction	PZT/Shear
Mounting Torque	5.9ft. lbs
Mounting Bolt Provided	see: 'How To Order' table x 1.4in long
Weight	6.5 oz. (nominal) body only
Screened Cable Assembly	HS-AC303 - straight HS-AC032 - right angle
Mounting Threads	see: 'How To Order' table

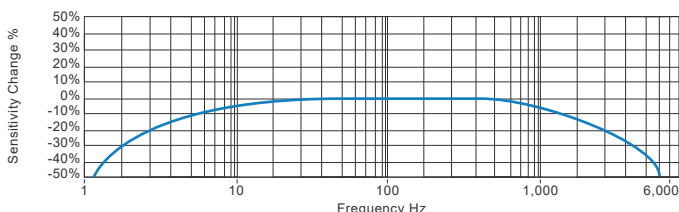
## Electrical

Outputs	4-20mA DC current proportional to Range and AC acceleration
Bias Voltage	3 Volts DC (nominal)
Supply Voltage	15-30 Volts DC (for 4-20mA)
Settling Time	1 second
Output Impedance	Loop Resistance 600 Ohms max. at 24 Volts
Case Isolation	$>10^8$ Ohms at 500 Volts

## Environmental

Operating Temperature Range	-13 to 194°F
Sealing	IP67
Maximum Shock	5000g
EMC	EN61326-1:2013

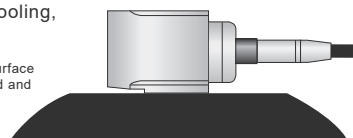
## Typical Frequency Response (4-20mA signal)



## Applications

Fans, Motors, Pumps, Compressors, Centrifuges, Conveyors, Air Handlers, Gearboxes, Rolls, Dryers, Presses, Cooling, VAC, Spindles, Machine Tooling, Process Equipment

Vibration sensor should be firmly fixed to a flat surface (spot face surface may be needed to be produced and cable anchored to sensor body.)



## How To Order

Product Prefix		Product Series												
HS - Hansford Sensors		421 - Industrial Vibration Sensor												
H	S	4	2	1	S	R	T	X	X	X	X	X	X	X
Extra Options (if required)					Velocity Range (RMS unless specified)					Sensitivity		Range	Cable/Connector	Mounting Threads
F	-	Filtered			U	-	Imperial Range						53 - 5 Pin M12	02 - ¼-28" UNF Male
L	-	316L Stainless Steel			UP	-	Imperial Peak Range							06 - M6 x 1mm Male
RT	-	Temperature Output PT100			UPP	-	Imperial Peak to Peak Range							08 - M8 x 1.25mm Male
S	-	90° Side Exit												
T	-	Temperature Output												



[www.hansfordsensors.com](http://www.hansfordsensors.com)  
[sales@hansfordsensors.com](mailto:sales@hansfordsensors.com)

We reserve the right to alter the specification of this product without prior notice  
TS1101U.3

