

# HS-210S Temperature Sensor

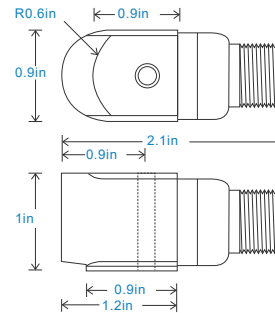
only temperature output via 3 Pin MS Connector

## Key Features

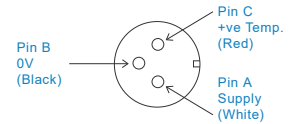
- Temperature output
- For use with data collector
- Side entry for easy access

## Industries

Building services, Pulp and Paper,  
Mining, Metals, Utilities, Automotive,  
Water, Pharmaceutical



Connection Details



## Technical Performance

Temperature Output	10 mV/°C standard 212°F - Option 302°F
Isolation	Base isolated

## Mechanical

Case Material	Stainless Steel
Mounting Torque	5.9ft. lbs
Mounting Bolt provided	see: 'How To Order' table x 1.2in long
Weight	4.4 oz. (nominal) body only
Screened Cable Assembly	see: <a href="http://www.hansfordsensors.com">www.hansfordsensors.com</a> for options
Connector	HS-AA005 - non-booted HS-AA068 or HS-AA069 - booted
Mounting Threads	see: 'How To Order' table

## Electrical

Operating Voltage	4-30 VDC
-------------------	----------

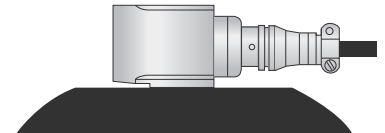
## Environmental

Operating Temperature Range	-67°F to see: 'How To Order' table for max
Sealing	IP68
EMC	EN61326-1:2013

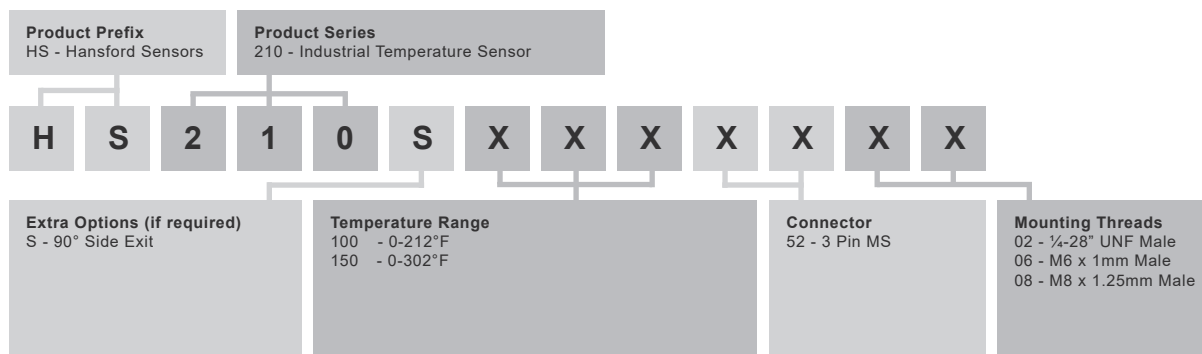
## Applications

Fans, Motors, Pumps, Compressors,  
Centrifuges, Conveyors, Air Handlers,  
Gearboxes, Rolls, Dryers, Presses,  
Cooling, VAC, Spindles, Machine Tooling,  
Process Equipment

Vibration sensor should be firmly fixed to a flat surface  
(spot face surface may be needed to be produced and  
cable anchored to sensor body.)



## How To Order



[www.hansfordsensors.com](http://www.hansfordsensors.com)  
[sales@hansfordsensors.com](mailto:sales@hansfordsensors.com)

We reserve the right to alter the specification of this product without prior notice  
TS388U.8

