

HS-150SRT Premium Accelerometer

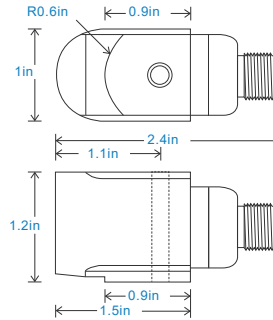
AC acceleration and PT100 temperature output via M12 Connector

Key Features

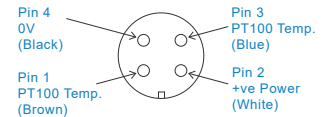
- PT100 temperature output
- Side entry for easy access
- Premium design

Industries

Building services, Pulp and Paper,
Mining, Metals, Utilities, Automotive,
Water, Pharmaceutical



Connection Details



Technical Performance

Mounted Base Resonance	see 'How To Order' table (nominal)
Sensitivity	see: 'How To Order' table $\pm 10\%$ Nominal 80Hz at 72°F
Frequency Response	90cpm (1.5Hz) to 600kcpm (10kHz) $\pm 5\%$ 30cpm (0.5Hz) to 720kcpm (12kHz) $\pm 10\%$ 12cpm (0.2Hz) to 900kcpm (15kHz) $\pm 3\text{dB}$
Isolation	Base isolated
Range	see: 'How To Order' table
Temperature Output	PT100 (100 Ohms)
Transverse Sensitivity	Less than 5%

Mechanical

Case Material	Stainless Steel
Sensing Element/Construction	PZT/Shear
Mounting Torque	5.9ft. lbs
Mounting Bolt Provided	see: 'How To Order' table x 1.4in long
Weight	7.2 oz. (nominal) body only
Shielded Cable Assembly	HS-AC010 - straight HS-AC011 - right angle
Mounting Threads	see: 'How To Order' table

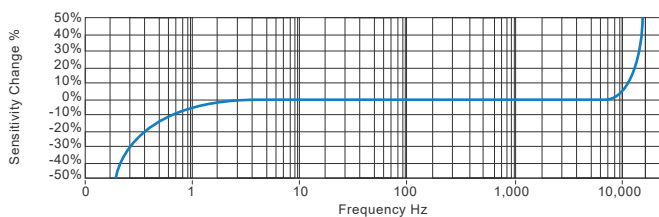
Electrical

Electrical Noise	0.1mg max
Current Range	0.5mA to 8mA
Bias Voltage	10 - 12 Volts DC
Settling Time	1 second
Output Impedance	200 Ohms max.
Case Isolation	$>10^8$ Ohms at 500 Volts

Environmental

Operating Temperature Range	-67 to 300°F
Sealing	IP67
Maximum Shock	5000g
EMC	EN61326-1:2013

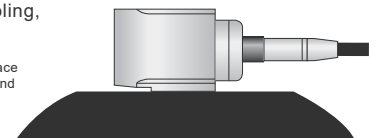
Typical Frequency Response (at 100mV/g)



Applications

Fans, Motors, Pumps, Compressors,
Centrifuges, Conveyors, Air Handlers,
Gearboxes, Rolls, Dryers, Presses,
Cooling, VAC, Spindles, Machine Tooling,
Process Equipment

Vibration sensor should be firmly fixed to a flat surface
(spot face surface may be needed to be produced and
cable anchored to sensor body.)



How To Order

Product Prefix		Product Series											
HS - Hansford Sensors		150 - Premium Industrial Vibration Sensor											
H	S	1	5	0	S	R	T	X	X	X	X	X	X
Extra Options (if required)				Sensitivity		Range		Resonant Frequency		Cable/Connector		Mounting Threads	
F - Filtered				010 - 10mV/g		±800g		1,620kcpm (27kHz)		01 - PUR		02 - ¼-28" UNF Male	
L - 316L Stainless Steel				030 - 30mV/g		±250g		1,500kcpm (25kHz)		54 - M12		06 - M6 x 1mm Male	
RT - Temperature Output PT100				050 - 50mV/g		±160g		1,380kcpm (23kHz)				08 - M8 x 1.25mm Male	
S - 90° Side Exit				100 - 100mV/g		±80g		1,260kcpm (21kHz)					
Y - 5% tolerance on sensitivity				250 - 250mV/g		±32g		1,140kcpm (19kHz)					
				500 - 500mV/g		±16g		1,020kcpm (17kHz)					



www.hansfordsensors.com
sales@hansfordsensors.com

We reserve the right to alter the specification of this product without prior notice

TS343U.10

