

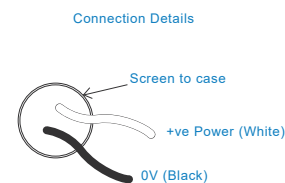
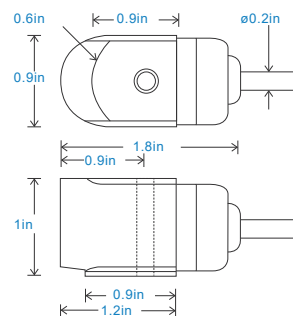
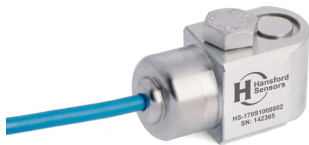
AC acceleration output via Flame Retardant Cable

Key Features

- Compact design
- Side entry for easy access
- Premium design
- Low smoke, halogen free cable

Industries

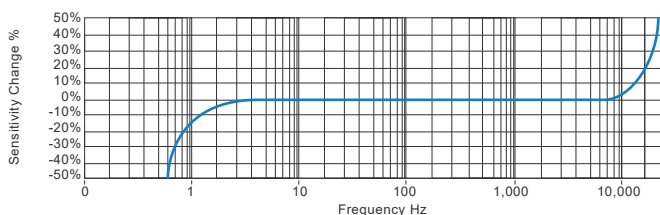
Building services, Pulp and Paper,
Mining, Metals, Utilities, Automotive,
Water, Pharmaceutical



Technical Performance		Mechanical	
Mounted Base Resonance	see 'How To Order' table (nominal)	Case Material	Stainless Steel
Sensitivity	see: 'How To Order' table $\pm 10\%$	Sensing Element/Construction	PZT/Shear
	Nominal 80Hz at 72°F	Mounting Torque	5.9ft. lbs
Frequency Response	120cpm (2Hz) to 840kcpm (14kHz) $\pm 5\%$	Mounting Bolt Provided	see: 'How To Order' table x 1.2in long
	90cpm (1.5Hz) to 960kcpm (16kHz) $\pm 10\%$	Weight	4.7 oz. (nominal) body only
	48cpm (0.8Hz) to 1,140kcpm (19kHz) $\pm 3\text{dB}$	Maximum Cable Length	3,280 ft.
Isolation	Base isolated	Standard Cable Length	16 ft.
Range	see: 'How To Order' table	Shielded Cable	Flame Retardant - length to be specified with order
Transverse Sensitivity	Less than 5%	Mounting Threads	see: 'How To Order' table

Electrical		Environmental	
Electrical Noise	0.1mg max	Operating Temperature Range	-40 to 212°F
Current Range	0.5mA to 8mA	Sealing	IP65
Bias Voltage	10 - 12 Volts DC	Maximum Shock	5000g
Settling Time	1 second	EMC	EN61326-1:2013
Output Impedance	200 Ohms max.		
Case Isolation	>10 ⁸ Ohms at 500 Volts		

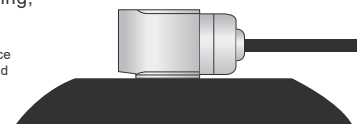
Typical Frequency Response (at 100mV/g)



Applications

Fans, Motors, Pumps, Compressors,
Centrifuges, Conveyors, Air Handlers,
Gearboxes, Rolls, Dryers, Presses,
Cooling, VAC, Spindles, Machine Tooling,
Process Equipment

Vibration sensor should be firmly fixed to a flat surface (spot face surface may be needed to be produced and cable anchored to sensor body.)



How To Order

Product Prefix HS - Hansford Sensors		Product Series 170 - Compact Premium Industrial Vibration Sensor							Cable Length (if integral cable) UXX - length specified in feet					
H	S	1	7	0	S	X	X	X	X	X	X	X	X	X
Extra Options (if required) F - Filtered L - 316L Stainless Steel S - 90° Side Exit T - Temperature Output Y - 5% tolerance on sensitivity		Sensitivity 010 - 10mV/g 030 - 30mV/g 050 - 50mV/g 100 - 100mV/g 250 - 250mV/g 500 - 500mV/g		Range ±800g ±250g ±160g ±80g ±32g ±16g		Resonant Frequency 1,800kcpm (30kHz) 1,680kcpm (28kHz) 1,560kcpm (26kHz) 1,440kcpm (24kHz) 1,320kcpm (22kHz) 1,200kcpm (20kHz)		Cable/Connector 01 - PUR 02 - Braided 07 - Silicon 08 - Flame Retardant 50 - 2 Pin MS 54 - M12		Mounting Threads 02 - ¼-28" UNF Male 06 - M6 x 1mm Male 08 - M8 x 1.25mm Male				



www.hansfordsensors.com
sales@hansfordsensors.com

We reserve the right to alter the specification of this product without prior notice

TS316U.6

